



Intigral Innovia 750 Lift & Tilt Blinds (3/4" Air Space) TB2404.06

Intigral
Blinds Technical Bulletin
Page 1 of 6

Rev 4/3/17

INTIGRAL 750 Lift & Tilt Blinds Between Glass

INTIGRAL offers the Innovia 750 lift and tilt mini-blind between the glass inserts for use in the residential and light commercial market. While mini-blinds or venetian blinds do afford some level of privacy to the homeowner, their primary design function is to provide added energy efficiency to the home by blocking a majority of the light and harmful infrared and UV rays while still allowing the benefit of reduced visible light into the shaded room. Innovia is manufactured as a mini-blind or venetian blind and by definition Innovia is a blind having numerous horizontal slats that may be set simultaneously at any of several angles so as to vary the amount of light admitted into the shaded space.

Unlike traditional mini-blinds inside the home, Innovia has no exterior cords to lift or tilt the blinds. By removing the cords, Innovia allows a greater level of safety than traditional interior mini-blinds that use cords to lift and tilt the blinds. Innovia is operated through an exterior sliding magnet that is guided by an exterior operator guide rail.

The Innovia lift and tilt insert is offered as a completed insulating glass unit (IGU) or as a kit that can be installed into an insulating glass unit by customers of Intigral. Each blind is custom manufactured to fit the exact dimensions of the window required. The lead time for stock sizes can be as quick as a few days or custom sizes can be delivered in a few weeks.



Blinds Product Availability

Colors	Alabaster, Gold, Silver, Tan Or White
Glass Options	Multiple glass options available—See Innovia Blinds Max Glass
Tempered	Tempered is available with pallet or custom quantity orders.
Configuration	3/4" Blind Insert Rectangle (No Shapes) Capillary Tubes (Standard) **NO Argon or Krypton
Operator	Side Slide Magnetic Operator Must specify Left or Right (To install inside looking out)
Spacer	Intercept® Stainless Spacer

Operator

Lift and Tilt

Green	Slimline
Yellow	STD Slide
Blue	Large Operator

Unit Size Specifications

Unit Height must be greater than or equal to 13"

For 3mm annealed the maximum short/long dimensions are 60"/82" and for tempered 42"/84".

Up to Width (inches)	Glass Size	14.0	17.6	22.6	24.6	26.6	28.6	30.6	32.6	34.6	36.6	38.6	40.6	42	44.6	46.6	48.6	50.6	52.6	63
Up to Height (inches)	13	Y	Y	Y	Y	Y	Y	Y	Y	Y	Y	Y	Y	Y	Y	Y	Y	Y	Y	
	16	Y	Y	Y	Y	Y	Y	Y	Y	Y	Y	Y	Y	Y	Y	Y	Y	Y	Y	
	24	Y	Y	Y	Y	Y	Y	Y	Y	Y	Y	Y	Y	Y	Y	Y	Y	Y	Y	Y
	26	Y	Y	Y	Y	Y	Y	Y	Y	Y	Y	Y	Y	Y	Y	Y	Y	Y	Y	Y
	31	Y	Y	Y	Y	Y	Y	Y	Y	Y	Y	Y	Y	Y	Y	Y	Y	Y	Y	Y
	36	Y	Y	Y	Y	Y	Y	Y	Y	Y	Y	Y	Y	Y	Y	Y	Y	Y	Y	Y
	41	Y	Y	Y	Y	Y	Y	Y	Y	Y	Y	Y	Y	Y	Y	Y	Y	Y	Y	Y
	46	Y	Y	Y	Y	Y	Y	Y	Y	Y	Y	Y	Y	Y	Y	Y	Y	Y	Y	Y
	51	Y	Y	Y	Y	Y	Y	Y	Y	Y	Y	Y	Y	Y	Y	Y	Y	Y	Y	
	56	Y	Y	Y	Y	Y	Y	Y	Y	Y	Y	Y	Y	Y	Y	Y	Y	Y	Y	
	61	Y	Y	Y	Y	Y	Y	Y	Y	Y	Y	Y	Y	Y	Y	Y	Y	Y		
	66	Y	Y	Y	Y	Y	Y	Y	Y	Y	Y	Y	Y	Y	Y	Y	Y			
	71.5	Y	Y	Y	Y	Y	Y	Y	Y	Y	Y	Y	Y	Y	Y	Y				
	75	Y	Y	Y	Y	Y	Y	Y	Y	Y	Y	Y	Y	Y	Y	Y				
	81	Y	Y	Y	Y	Y	Y	Y	Y	Y	Y	Y								

Innovia Standard Slats, Ladders, Lift Cords And Extrusions

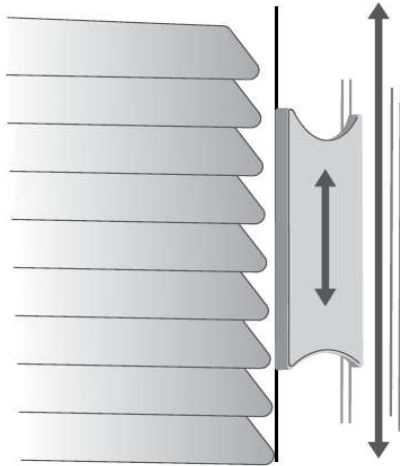
Item	Blind Color	Innovia Slat Color	Ladder & Lift Cord color	Extrusions	Operator Color
1	White	White	White	White	White
2	Alabaster	Alabaster	White	Alabaster	Alabaster
3	Tan	Tan	Tan	Alabaster	Alabaster
4	Gold	Gold	Tan	Alabaster	Alabaster
5	Silver	Silver	Gray	Lt Gray	Lt Gray

String Assembly

Blinds are manufactured with a different number of vertical ladders based on the width and height of the unit being ordered.

Width 14" to 25.87"	2 ladders
Width 25.875" to 37.59"	3 ladders
Width 37.595" to 45.57"	4 ladders
Width 45.576" to 67.50"	5 ladders

Lift & Tilt Blind Operation



To raise and lower blinds: slide the operator up and down to raise and lower cords.

Blinds will tilt when the operator is moved 1 to 2 inches in either direction.

To tilt the blinds to the outside, raise the operator.

To tilt the blinds to the inside, lower the operator.

Lift and Tilt blinds are sun shading devices that offer a minimum level of privacy. For the best privacy when looking at the blind from the outside of the house, keep the blind angle looking down toward the ground when viewing from the inside of the house. When the blind angle is looking up from the inside of the house, people on the outside can sometimes view things on the inside of the house depending on lighting conditions and angle of viewing.

CARE CONSIDERATIONS:

Slide operator in a gentle and smooth motion to avoid disengaging the magnetic operator.

Keep the operator track clean by removing all dirt and debris from the track.

TROUBLESHOOTING:

If operator becomes disengaged:

Ensure slide operator is inserted into the operator guide rail.

Slide the operator along the rail until it connects with the inside magnets. **You should feel a single click.**

This first click indicates that you've engaged two of the four sets of magnets. **Continue to slide the operator until you feel a second click.** This will ensure you have engaged all four sets of magnets.

Visit www.Integral.com to watch the video demonstration of this procedure.



If the blinds are not level:

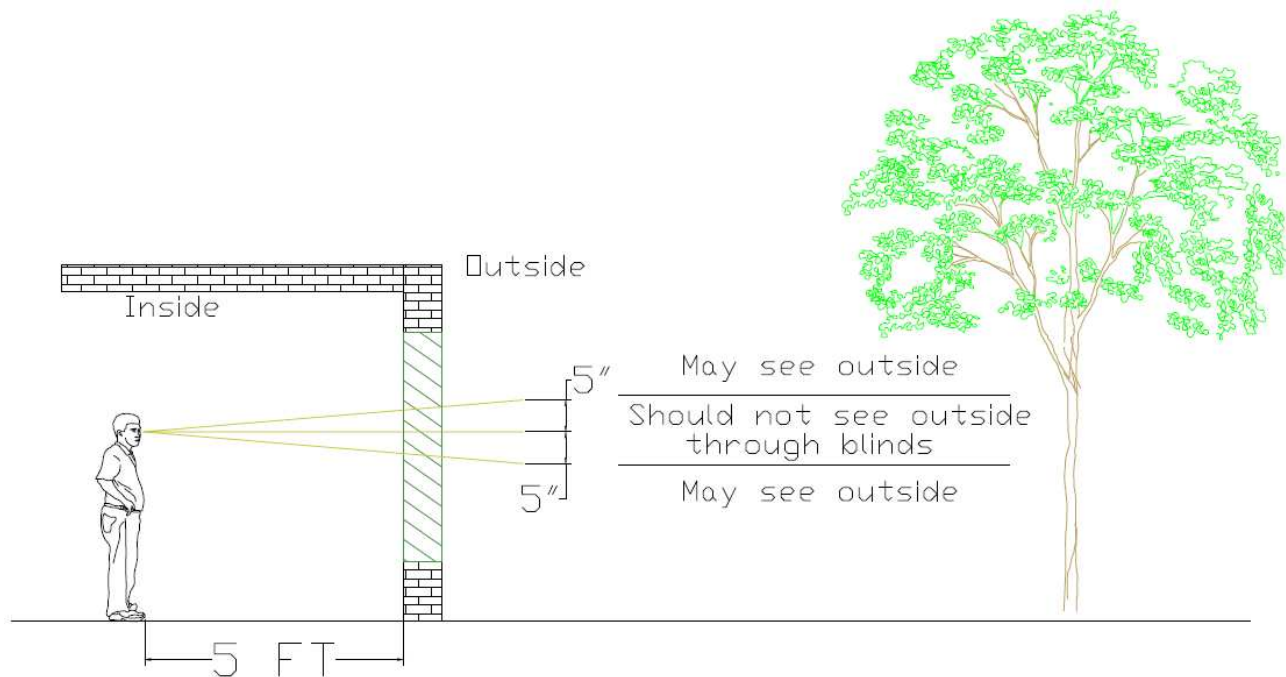
The Innovia Blind is equipped with a self-leveling feature. Simply lower the blinds fully, then slowly raise the blind to the desired height. Check the level and repeat as need until the blind bottom rail is level.

Caution during extreme cold or rapid changes in temperature or barometric pressure.

The blind may not function properly during extreme cold or rapid changes in temperature or barometric pressure. Allow 24 to 48 hours for glass unit to stabilize before raising or lowering the blind. Tilt function may still work normally; however, if it is contacting the glass when operated, allow 24 to 48 hours for unit to stabilize.

Lift & Tilt Blind Viewing Criteria

Blinds should be viewed from a distance of five feet or greater. When looking at the blinds at eye level and the blind slats are pointing upward from the side being viewed, you should not be able to see anything for approximately five inches above and below eye level. However, you may be able to see shadows or other reflective light. It is possible to look through the blinds at other angles.



NFRC Simulations of Innovia Blinds

The LBNL WINDOW and THERM simulation programs have the capability to model “complex glazing systems” which include venetian blinds and other systems that can be characterized by BSDF (Bi-Directional Scattering Distribution Function) files.

To support the modeling of these complex systems, Intigral had Innovia characterized by LBNL/NFRC for optical and thermal properties. The Complex Glazing Database (CGDB) contains the data needed to model Innovia by Intigral blind system into customers design platforms for NFRC labeling.

WDMA and AAMA Cycle Slam Testing In Swing Doors

Intigral had independent testing of a half lite Innovia Blind installed in a swing door performed at Intertek. Testing was conducted to WDMA 7-14 Cycle Slam Test and AAMA 920-11 Specification for Operating Cycle Performance of Side-Hinged Exterior Door Systems. After 250,000 cycle slams the blinds still operated, passed WDMA 7-14 and met Class CW of AAMA 920-11.

Change History	Description	Document Approval	Revision	Date
2/26/15	Initial Issue	Gwenne Hanzel	1	2/26/15
4/01/15	Size Grid	Gwenne Hanzel	2	4/01/15
10/19/15	Size Grid	Gwenne Hanzel	3	10/19/15
05/09/16	General Revision	Mark Hutchinson	4	05/09/16
11/02/16	Update Size chart	Gwenne Hanzel	5	11/02/16
4/3/17	Update to 750 and avail options	Gwenne Hanzel	6	4/3/17