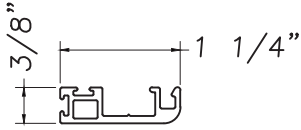




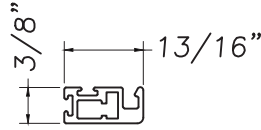
QUAKER
COMMERCIAL WINDOWS AND DOORS

**SCREEN
EXTRUDED FRAME RAILS
(FOR WINDOWS)**

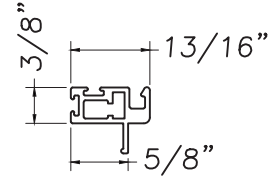
M21244



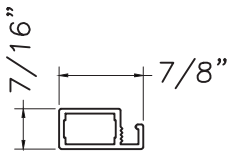
M21244



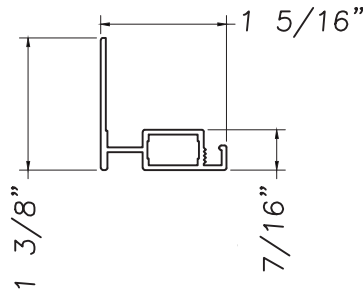
M21244



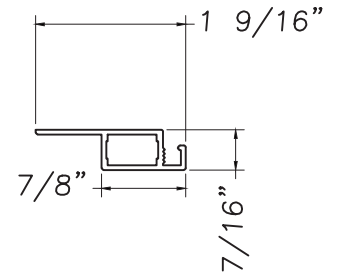
M21244



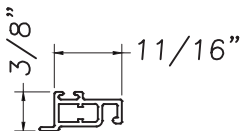
M21244



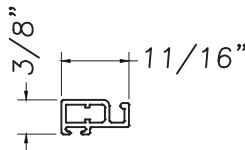
M21244



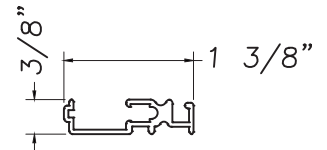
M21244



M21244



M21244



Our products are tested to the standards of and certified by the American Architectural Manufacturer's Association, the National Fenestration Rating Council and the Window & Door Manufacturers Association.

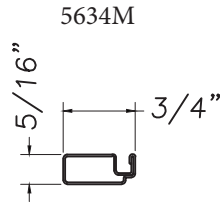


QUAKER
COMMERCIAL WINDOWS AND DOORS

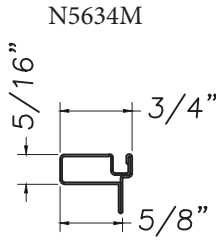


QUAKER
COMMERCIAL WINDOWS AND DOORS

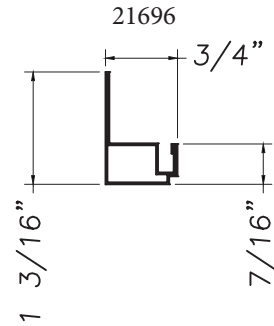
**SCREEN
ROLL FORM FRAME RAILS
(FOR WINDOWS)**



PT# 5634M



PT# N5634M



Our products are tested to the standards of and certified by the American Architectural Manufacturer's Association, the National Fenestration Rating Council and the Window & Door Manufacturers Association.



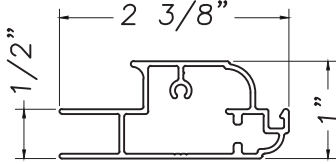
QUAKER
COMMERCIAL WINDOWS AND DOORS



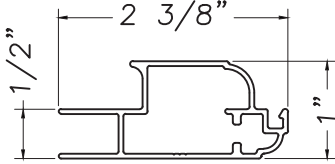
QUAKER
COMMERCIAL WINDOWS AND DOORS

**SCREEN
EXTRUDED FRAME RAILS
(FOR PATIO DOORS)**

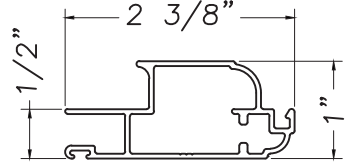
M21103



M21104



M21105



Our products are tested to the standards of and certified by the American Architectural Manufacturer's Association, the National Fenestration Rating Council and the Window & Door Manufacturers Association.

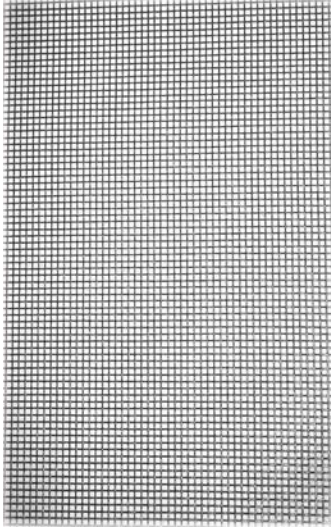


QUAKER
COMMERCIAL WINDOWS AND DOORS

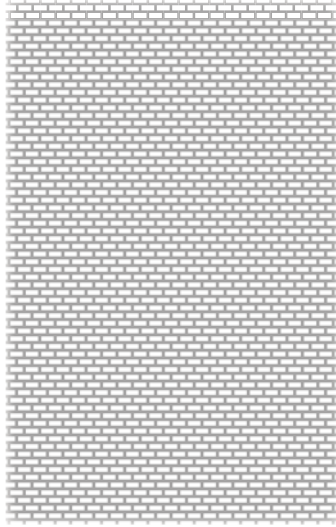


MESH

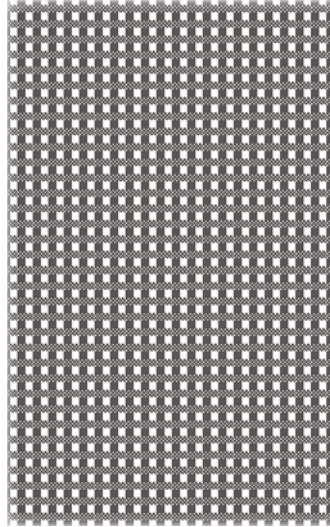
Fiberglass (BetterVue™)



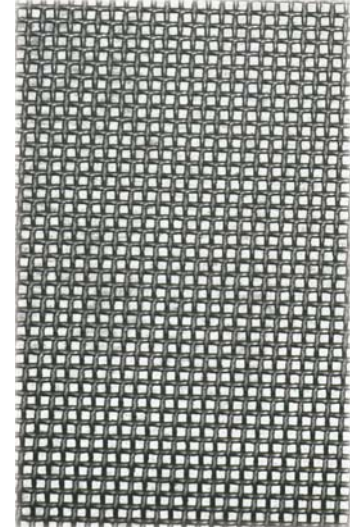
Aluminum



SunScreen



Security Screen
(Stainless Steel - .028)



STYLES

Full Screen (Lift Out)

Found on Double Hung, Casement and Awning Window models.

Half Screen (Lift Out)

Found mainly on Single Hung and Horizontal Slider Window models. Can also be used on Double Hung Window models.

Hinged Screen (Swing Open)

Available for use on Casement Window models and In-swing Patio Doors.

Sliding Screen

Available for Sliding or Hinged Patio Doors.

Wicket Screen

Added component to an existing screen. Used most often on Hopper (Pull in) Window models.

Retractable Screen

Used most often on Push-Out Casement, Push-Out Awning window models, and Sliding or Hinged patio doors.

Our products are tested to the standards of and certified by the American Architectural Manufacturer's Association, the National Fenestration Rating Council and the Window & Door Manufacturers Association.

